

COLOQUICK

A BETTER FUTURE



MANUAL FOR CHANGING THE FOIL AND/OR CONTROL UNIT

Table of content

Tools needed.....2

Procedure explanation and safety.....2

Procedure Walkthrough.....3

Procedure explanation and safety

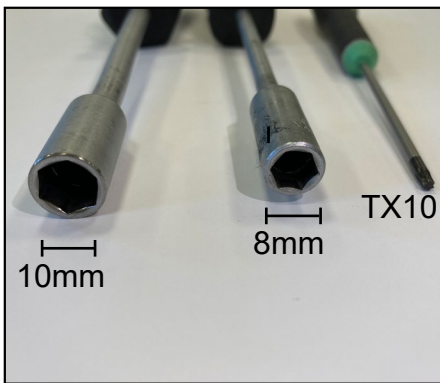
This manual is a guide for changing the foil and/or control unit.

- Children and animals must never be left alone with the ColoQuick. Be especially careful when the top lid and/or service door is open.
- There is a risk of electric shock when the service door is open. It should only be opened by authorized personnel trained by Calvex A/S.
 - This Operation must only be performed by authorised personnel trained by Calvex A/S.

Tools needed



Tape, tools and isopropyl alcohol.



Foil and Control unit.

Procedure Walkthrough



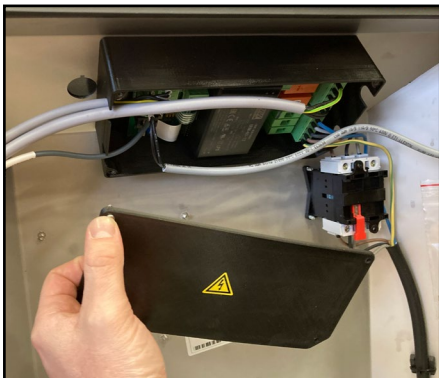
1. Place the THAW unit in a optimal height for easy access. Open top lid to deactivate the lid switch.
Make sure the machine is turned off.



2. Remove the nuts to unlock the service door.
DANGER! Risk of electric shock when open! TURN OF THE UNIT!



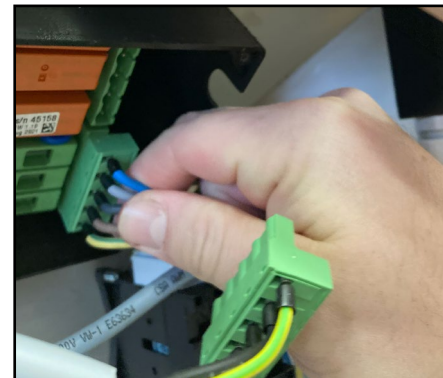
3. Open the service door to get access to the black box.



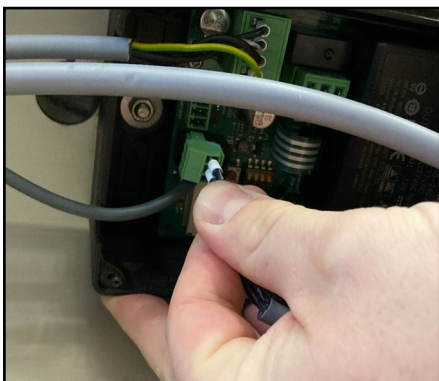
4. Remove the four screws and remove the lid from the black box. **DANGER! Risk of electric shock!**



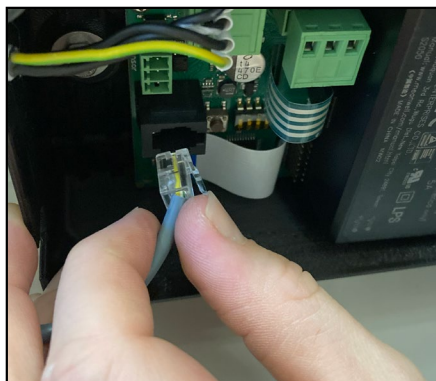
5. Do not touch the electrical components when the machine is turned on!



6. Disconnect the plugs. First the two green plugs in the right side of the control unit.



7. Disconnect the small green plug in lower left corner of the control unit.



8. Disconnect the transparent plug on the left side of the control unit.



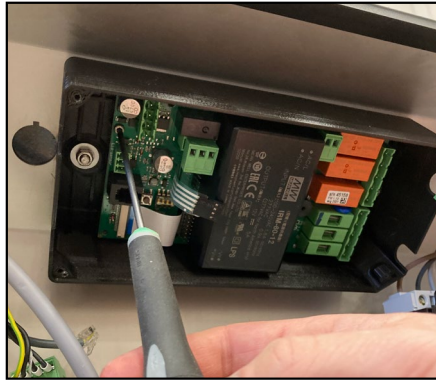
9. Remove the large green plug in the upper left corner of the control unit.



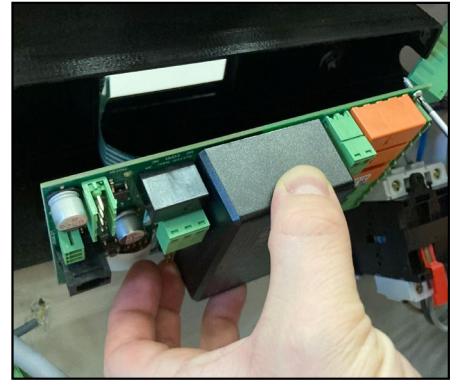
Procedure Walkthrough



10. Unplug the display connector from the control unit.



11. Remove the six screws attaching the control unit to the black box.



12. Remove the control unit from the box. Always handle the control unit with caution.



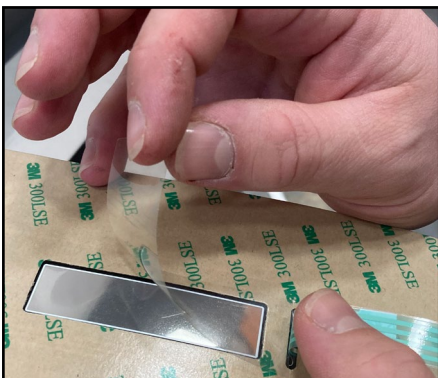
13. Remove the foil from the service door. Start in one corner and pull it off.



14. Clean and remove the remaining glue of the service door by using paper towel and isopropyl alcohol.



15. Prepare four pieces of tape. Use tape that is easy to remove and do not leave marks.



16. Remove the protector from the display window in the new foil.



17. Hold the display in place and attach it to the service door with the prepared tape pieces.



18. Place the tape only on one side and in the middle. Make sure the display is in the right place before continuing to the next step.

Procedure Walkthrough



19. Slowly remove cover from the corner of the foil and fold it backwards and down.



20. Hold the cover downwards and stick the corner to the surface.



21. Press the foil evenly on to the service door.



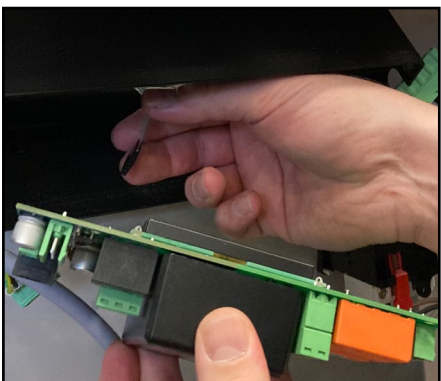
22. Pull the cover out from underneath the foil. **Do not lift the foil to much, it can break the foil.** Check the display connector is placed through the hole.



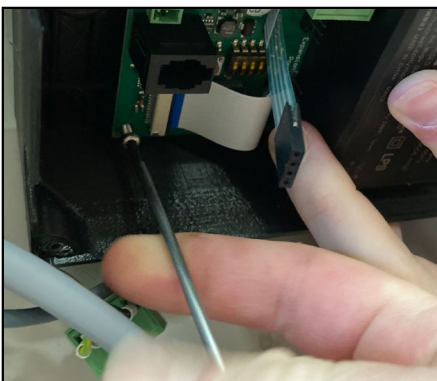
23. Press the foil evenly onto the service door while holding the foil straight.



24. Check to make sure the buttons can be pressed down.



25. If the unit is new, remove the display protector. Slide the display connector through the aligned hole in the control unit.



26. Secure the control unit in the right place with the six screws.



27. Connect the display connector to the control unit.



Procedure Walkthrough



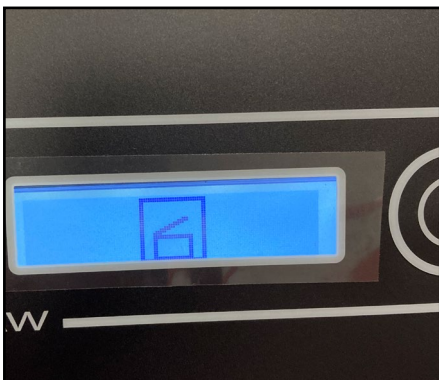
28. Plug in the transparent plug.



29. Plug in the green plug placed in the lower right corner.



30. Turn on the machine.
DANGER! Risk of electric shock when the service door is open!



31. Check to see if the display is centered. The image above shows that the display is placed to low.



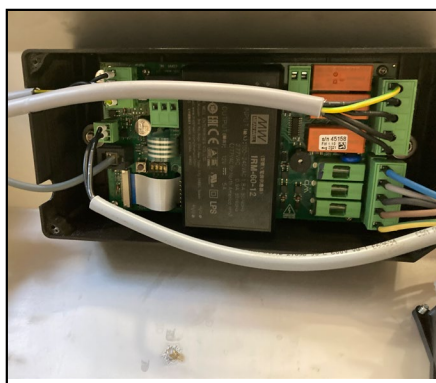
32. Adjust the black box placement by loosening the two nuts located on each side of the black box and move the box into place.



33. Make sure the whole display area is visible.



34. Turn off the machine.

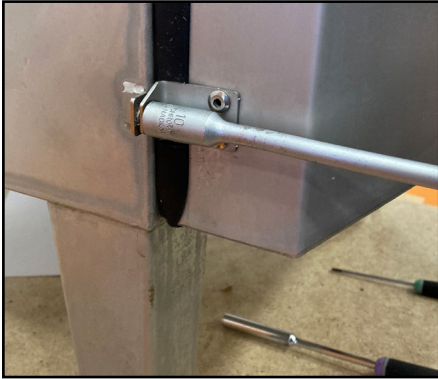


35. Plug in the rest of the plugs to leave the control unit in same condition as before.



36. Close the black box with the lid and four screws.

Procedure Walkthrough



37. Close the service door with use of the nuts.



38. The THAW unit is ready to use.

If you have questions,
please contact us at:

ColoQuick

Tel: +45 9753 7333

Email: info@ColoQuick.com



